

# Postal Himal

QUARTERLY JOURNAL OF THE NEPAL AND TIBET PHILATELIC STUDY CIRCLE

NTPSC Homepage (courtesy of Rainer Fuchs) <http://fuchs-online.com/ntpsc>



Number 154

2<sup>nd</sup> Quarter 2013



*Postal Himal* is a quarterly publication of the Nepal & Tibet Philatelic Study Circle. Membership subscriptions run from January through December of each year. Dues should be paid in local currency at the prevailing exchange rate to the Society representative in your area.

	<u>One Year</u>	<u>Three Years</u>	<u>Life Member</u>
American Philatelic Society Affiliate #122	£20	£55	£400
British Philatelic Federation Affiliate #435	\$30	\$80	\$600
	€25	€70	€500

**Secretary:** Mr. Colin T. Hepper  
12 Charnwood Close  
Peterborough, Cambs. PE2 9BZ  
UK  
Phone 01733-349403  
email: colinhepper@aol.co.uk

**Editor:** Mr. Richard M. Hanchett  
6 Rainbow Court  
Warwick, RI 02889-1118  
USA  
Phone (401) 738 0466  
email: editorofpostalhimal@cox.net

**The Board of Directors:** President: Mr. Colin T. Hepper  
Secretary: Mr. Colin T. Hepper Treasurer: Mr. Colin T. Hepper  
Members at large: Mr. Christopher Kinch, Mr. Alan Warren  
Vice President: Mr. Geoffrey Flack  
Auctioneer: Mr. Leo Martyn  
Editor: Mr. Richard M. Hanchett

**Representatives:** Europe: Mr. Colin T. Hepper - see address above  
Nepal: Mr. Surendra Lal Shrestha, G. P. O. Box 72, Kathmandu, Nepal  
USA: Mr. Roger Skinner, 1020 Covington Road, Los Altos, CA 94024, USA

**Patron:** Mac Linscott Ricketts

**Honorary Life Members:** Colin Hepper, Jit Bahadur Manandhar

**Life Members:** Richard G. Azizkhan, Mario C. Barbieri, Joachim Bednorz, Johannes Bornmann, Jeremy Brewer, Steve Chazen, Elizabeth Downey, Geoffrey Flack, Richard M. Hanchett, Douglas Hatch, Wolfgang C. Hellrigl, William Jansen, Jaya Hari Jha, Manfred Lauk, Gerhard Lenser, Leo Martyn, R. Murray, Bruno le Peut, Peter Planken, Kedar Pradhan, Barbara Praytor, Surendra Lal Shrestha, Roger Skinner, Rishi Tulsyan, Dick van der Wateren, Edmond Weissberg, Robert Wightman, Danny Kin Chi Wong, Alfonso G. Zulueta Jr.

**New Members:**

**Rejoined:**

**Change of Address:**

**Dropped for Non-payment of Dues:**

<u>Publishing Schedule:</u>	<u>Issue</u>	<u>Cutoff for Articles</u>	<u>Into Mail</u>
	155	30 August 2013	13 September 2013
	156	22 November 2013	06 December 2013
	157	21 February 2014	07 March 2014
	158	23 May 2014	06 June 2014

### TABLE OF CONTENTS

Officer's Corner	Geoffrey Flack	1
Editor's Ramblings	Richard M Hanchett	1
Congratulations		1
Upcoming		1
Nicholas Gervase Rhodes 1946-2012	Brian W. Smith	2
Tibetan 1 Sang Multiple	Brian W. Smith	3
Forged Tibet Increases at Traditional Auction Houses	Bo C. Olsson	4
Combined NTPSC Financial Accounts for 2012	Colin Hepper FRPSL	7
Early B4 Gyantse Postmark	Brian W. Smith	8
The Mount Everest Stamps of Tibet	Alan Warren	9
Custom Mark of Listi	Dick van der Wateren	11
A Bailey Cover?	Brian Smith	13
A Message from the President	Colin Hepper FRPSL	14
Commerative Covers	Surendra Lal Shrestha	15
Photos from Nepal	Alfonso G. Zulueta, Jr.	16

### Officer's Corner

[The following was received from Geoffrey in March. He has given permission to using as his Officer's Corner article. The Bo referred to is Bo Olsson-ed.]

Richard,

Sorry for the delay in getting back to you. I am in the middle of a Chemo treatment and wanted to talk to my doctor before deciding if I would attend WESTPEX.

I will have a Pet Scan late next month ... plus follow-ups with two doctors. I cannot pin down the dates and I think I will not get to WESTPEX

this year.

I am handling the Chemo quite well - usually quite tired but not feeling a lot of side effects. It is not fun, but I seem to be handling the Chemo better than most.

If I get clearance from my doctors we hope to go to Thailand in early May.

Pass on my best wishes to all and apologize to all for my not attending WESTPEX.

Give my best to Bo.

Geoff Flack

### Editor's Ramblings

Those of you who have been asking about Geoffrey Flack should find the above to be encouraging, I certainly do. When we first reported Geoffrey's cancer [150:1], he had said that the prognosis was not good, but that he intended to battle it, and he has certainly done that. Keep up the fight Geoffrey!

Sadly another of our early members Nicholas Rhodes has passed away (please see page 2). Not only a knowledgeable philatelist but also a well known numismatist as well.

On a pleasant note we had an enjoyable meeting at WESTPEX. Those present included our President, Colon Hepper, along with Roger Skinner, Frank Vignola, Ken Goss, Al Zulueta, Leo Martyn, Ed Gosnell, Gerhard Wolf, and Richard M. Hanchett. As usual a very good show, with plenty of dealers willing to take money (and sell plenty of interesting items) and a very enjoyable awards banquet.

At our WESTPEX meeting we decided to hold a meeting at NY 2016 and authorized

Colin to spend funds to get a meeting room for us. So continue making (or start making) your plans for what will be a truly outstanding event. And there will probably be dealers there who can supply whatever you need for your collection, at a price, of course.

In the meantime there is WESTPEX 2014 to look forward to as well as NAPEX 2014. NAPEX is of a similar caliber to WESTPEX and if you are near the Washington, DC area the first weekend in June it will be worth your while to attend.

Your editor spent the past weekend attending Commencement exercises at the University of Rhode Island as a Golden Grad. A good time seeing old friends and enjoying a tour of the campus - so many new buildings and a huge increase in the number of graduates. And shortly it will be time for Patricia and I to head to Hawaii for 4 weeks - a trip that we try to make every three years. A long trip, but enjoyable.

### CONGRATULATIONS:

**Edward Gosnell** was awarded Gold plus the Nepal and Tibet Philatelic Study Circle Award for his exhibit "The Kingdom of Nepal Seals, Postmarks and Cancellations 1795-1911" at WESTPEX

### UPCOMING:

WESTPEX 2014 April 25-27 San Francisco Airport Marriott Hotel

NAPEX 2014 June 6 - 8 Hilton McLean Tyson's Corner Hotel

NY 2016 May 28 - June 4 Jacob Javits Convention Center

## Nicholas Gervase Rhodes

1946 - 2011

from Brian W. Smith

I learned of Nick's passing - in 2011 - after I had received no response to an email I sent him in April, 2013 regarding a Bailey cover.

As a fellow N&TPSC member I was totally unaware of his importance in the numismatic world (see [www://http.Wikipedia.com](http://www.Wikipedia.com)). I suspect also, that the coin world was also unaware of Nicholas' philatelic interests.

We first met in 2009 at a talk he gave on the Postal History of Sikkim and Tibet at the Royal Philatelic Society in London.

I found him a very friendly and amiable person, willing to share and exchange information. Strange to relate, for several weeks after his talk we swapped information regarding the number of British Officers killed in the Younghusband invasion of Tibet in 1903-4!

Nicholas was influential in getting Margaret D. Williamson to write, in the mid 1980s, a biography of her husband Derrick Williamson<sup>1</sup> who was Political Officer, Sikkim 1933-35. Sadly, Mr. Williamson died at Gyantse, Tibet in 1935. Margaret retained a small but important collection of Tibetan stamps obtained by her husband and she kindly allowed Nicholas to have a representative sample of them. Of the 1933 issue, one was proven to have been issued earlier than the date given by Waterfall. I recall Geoffrey Flack alluding to this fact on his website.

Nicholas married Deki Laden La (from a Sikkimese family in Darjeeling) and together they wrote a wonderful book - *A Man of the Frontier. S. W. Laden La (1876-1936) - His Life and Times in Darjeeling and Tibet*. Kolkata, 2006.

For those who do not own them, both the Williamson and Laden La books are thoroughly recommended. I treasure my signed copy of the latter and the memory of a very good friend. In his way Nicholas was a true 'man of the Himalayas'.

If you scroll down to the bottom of the Wikipedia piece there is a brief obituary in the 'Shillong Times' which states he passed away in July 2011.

---

<sup>1</sup> Memories of a Political Officer's Wife in Tibet, Sikkim & Bhutan - Margaret D. Williamson. Wisdom Publications, London, 1987

## Tibetan 1 Sang Multiple by Brian W. Smith

I recently purchased this strip of used Tibet 1 Sang, grey-green stamps (clichés 4, 8, 12) dating from the early 1950s.

They are franked by the seven wavy line Telegraph cancel. The stamps adhere to the remains of an envelope and it appears that four lines of the cancel were removed when the stamps were cut from the cover. Multiples of the 1 Sang are now scarce, complete covers even more so - I have yet to add one to my collection.

There is still much uncertainty about when these stamps first appeared. Based on the 1912 design of Tibet's first issue the stamps appear not to have been used earlier than 1950. Waterfall was of the opinion that the block for

the stamps was made in Lhasa c1950. He noted that the vast majority of covers bearing a 1 Sang were from Gurkhas in Tibet. He speculated that the plate may have originated with the Nepalese in Lhasa - many Tibetan forgeries had been traced to Nepalese sources - and somehow entered the Lhasa postal system.

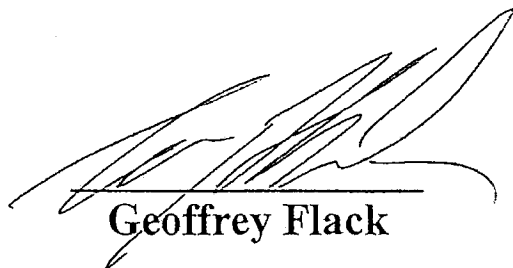
Haverbeck made no mention of the sudden appearance of the 1 Sang. Frealon Bibbins and Geoffrey Flack (Tibet First Series, 1912 Plating Notebook - 1992) believed the plates for all six 1912 values were made at the same time by the same artist. If that were so, why did the 1 Sang not appear until 38 years later? Like many mysteries connected with Tibetan philately, perhaps we shall never know.

### GEOFFREY FLACK TIBETAN STAMPS AND POSTAL HISTORY OPINION

Date: September 8, 2011

Number: 2865

In my opinion the Tibetan stamp illustrated on the right is a genuine 1 Sang (Scott #6), Grey Green (Cliché 4 / 8 / 12) cancelled by black Telegraph cancel.



Geoffrey Flack

Box 16011, Lynn Valley Postal Outlet, North Vancouver, B.C., Canada V7J 3S9  
Tel. (604) 986 3898, E-Mail: [geoffrey@tibetanpost.com](mailto:geoffrey@tibetanpost.com)


## Forged Tibet Increases at Traditional Auction Houses

by Bo C. Olsson

eBay is eBay and there you need knowledge to avoid buying all forged or manipulated Tibet items. Of native Tibetan issues the absolute majority are modern forgeries. But we are used to trust what is offered from the traditional auction houses. Albeit, in older times even these houses these houses occasionally could offer a forged item, but they were always very quick to withdraw any such item when it was brought to their attention. Today, however, they seem to have changed. I noted some forged items in an auction in one of the large German auction houses and notified them. The items were duly withdrawn, but understand my surprise when they turned up again after one more auction had been held. One cover was sold for many hundred euros and may turn up in an exhibition collection. The question is whether the jury contains a Tibet expert - otherwise it will surely pass the jury. It seems that even well known houses today are more careless in what they offer us. And sometimes they are not even willing or interested to listen to what experts are telling them. The German Philatelic Association's journal *Philatelie* tells us about an expert in Polish philately who detected a forged cover in an auction catalogue. He notified the company, but his warning was ignored and the cover was sold to a happy buyer. Just think in the future how all 'happy' buyers of these worthless items will be when they try to sell them.

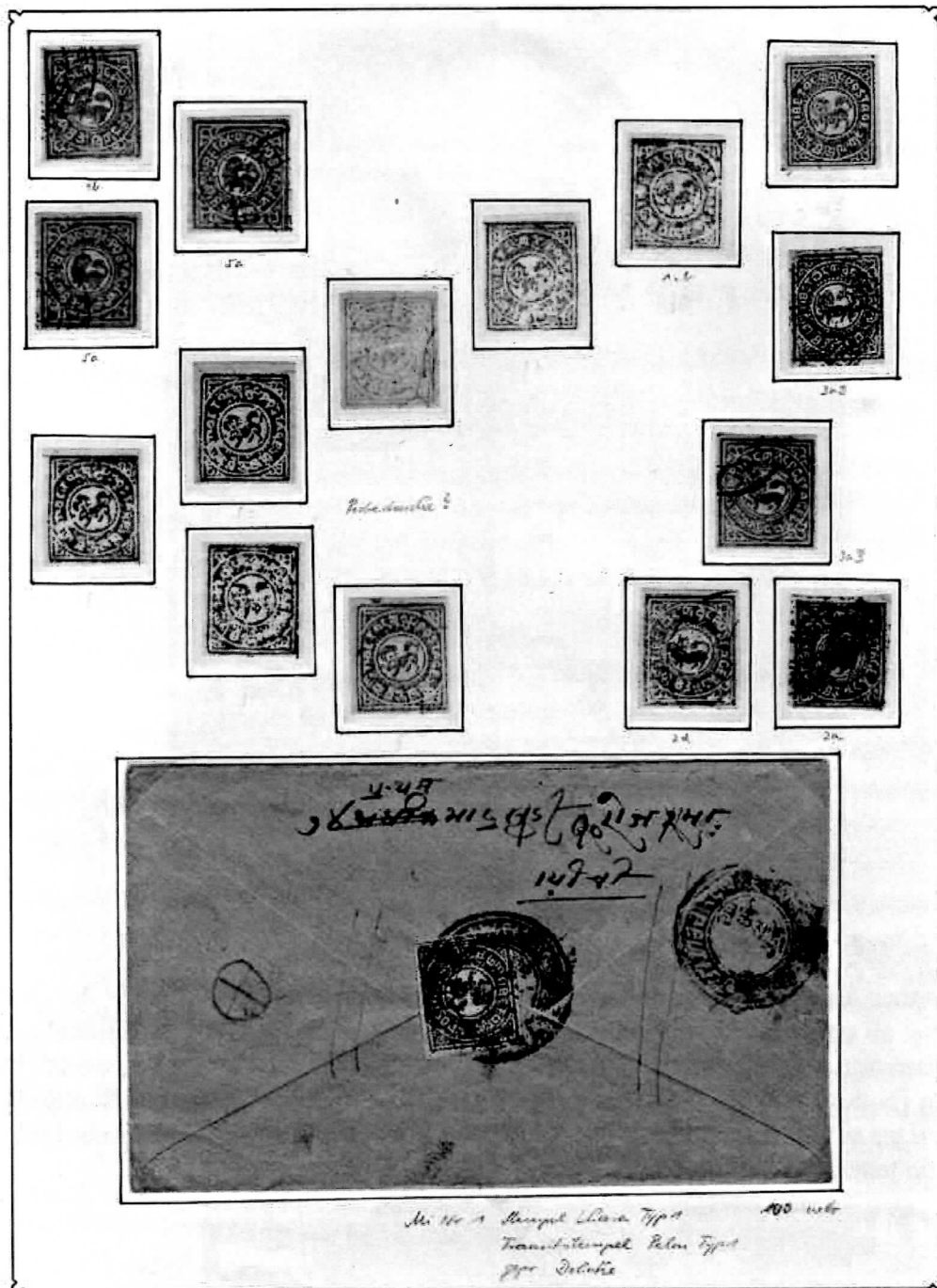
I have picked out four examples from recent European catalogues. I have also seen at least one forged lot from a leading US auction house, so it is not an isolated European problem, just that I mostly watch the European houses.

A small auction company in Germany offered this:

Order-#	Michel	Scott	Yvert	SG	
9242-A144-4588					●
					
<b>Description</b> 1912, 10 zegels 1° Emissie, alle gestempeld, ntz.					
<b>Dealer</b> [Redacted]					
<b>Auction</b>					
<b>Minimum Bid:</b> 20.00 EUR					

All ten of the offered stamps are classic forgeries! I understand that a small auction house could have limited knowledge. The auction is still going to go on.

A medium sized auction house put a lot of 7 album pages of Tibet in their auction. Most are modern forgeries, a few classic forgeries, one genuine stamp and one genuine cover. A nice 'find' for a start price of just 450 euros (approximately US\$ 590), Fortunately it did not sell and that is the good news. The bad news is that an auction house who should know better should offer such material for such a price.



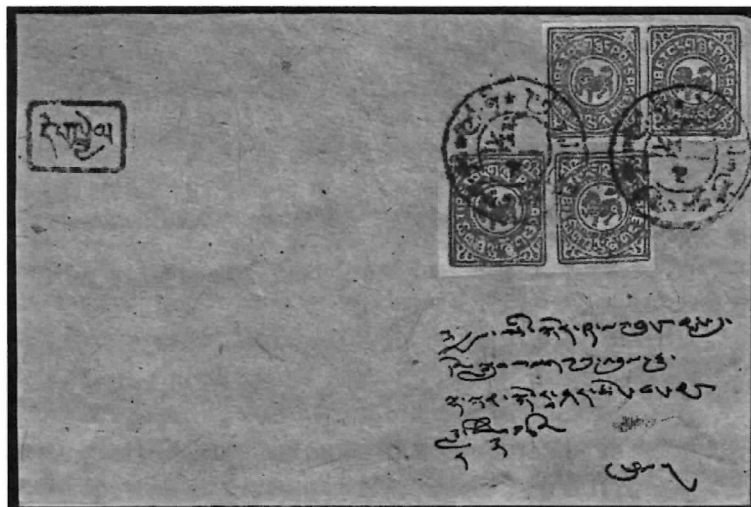
The third example comes from one of the world's leading auctioneers. A house I have had the greatest respect for - at least until this happened. The auction text reads: TIBET, 1912-65, selection of 45 native covers or cards, few mixed franking with Indian or Nepal adhesives, some unusual markings, those in addition to the usual Lhasa, Phari, Shetaste, better items included, plus a selection of 16 unused picture postcards (1930s), mostly in color, including Sven Hedin series, mixed condition, valuable lot, Estimate 1 800 - 2 000 CHF (approximately US\$ 1,930 - 2,140).

I have not gone through this lot, so I can only comment on what I see in the catalogue images, but from what I see, I fear the worst. The second cover in the 2nd row is manipulated. The two covers in the 4th row are both simple modern forgeries with forged stamps and postmarks. This lot fortunately also did not sell. Good, so I think that buyers are picking up knowledge.





Example number four is a cover with modern forgeries and postmarks. This is the type of cover offered on eBay all the time, mostly only for a few dollars. It has a faked directional mark and a 1933 type registration handmark, but four 1912 stamps of the 2/3 tranka value. Two of them colour errors in green [bottom two stamps - ed.]. For a genuine registered cover one stamp would have been enough. This wonderful cover can be yours for only 100 euros (approximately US\$ 130) plus commission and taxes. It is still under auction.





**The NTPSC Combined Statement of Accounts: 01 January - 31 December 2012**  
by Colin Hepper FRPSL

<b>Statement of Accounts - USA (\$)</b>			
	<b>Income</b>		<b>Expenditure</b>
Subscriptions	1080.00	<i>Postal Himal</i> Printing	1060.76
<i>Postal Himal</i> Back Issues	8.30	<i>Postal Himal</i> Postage	1563.73
		Stationery	146.24
		Miscellaneous	96.95
		Bank Reconciliation	931.00
<b>Total</b>	<b>1088.30</b>	<b>Total</b>	<b>3798.68</b>
<b>Balance (Income - Expenditure)</b>	<b>-2710.38</b>		
Balance Brought Forward 2011	4169.91		
<b>Total</b>	<b>1459.53</b>		
<b>Statement of Accounts - Europe (£)</b>			
<b>Current Account</b>			
Carried Forward	1214.80	Postage	1.38
Subscriptions	163.79	Miscellaneous	21.17
<b>Total</b>	<b>1378.59</b>	<b>Total</b>	<b>22.55</b>
<b>Balance (Income - Expenditure)</b>	<b>1356.04</b>		
<b>Business Account</b>			
Carried Forward	2714.75		
Bank Interest	1.05		
<b>Total</b>	<b>2715.80</b>	<b>Total</b>	<b>0.00</b>
<b>Balance (Income - Expenditure)</b>	2715.80		
<b>Balance (Current Account + Business Account)</b>	<b>4071.84</b>		
<b>COMBINED TOTAL (£)</b>			
USA \$ converted to £'s	941.63		
Europe	4071.84		
<b>TOTAL</b>	<b>5013.47</b>		

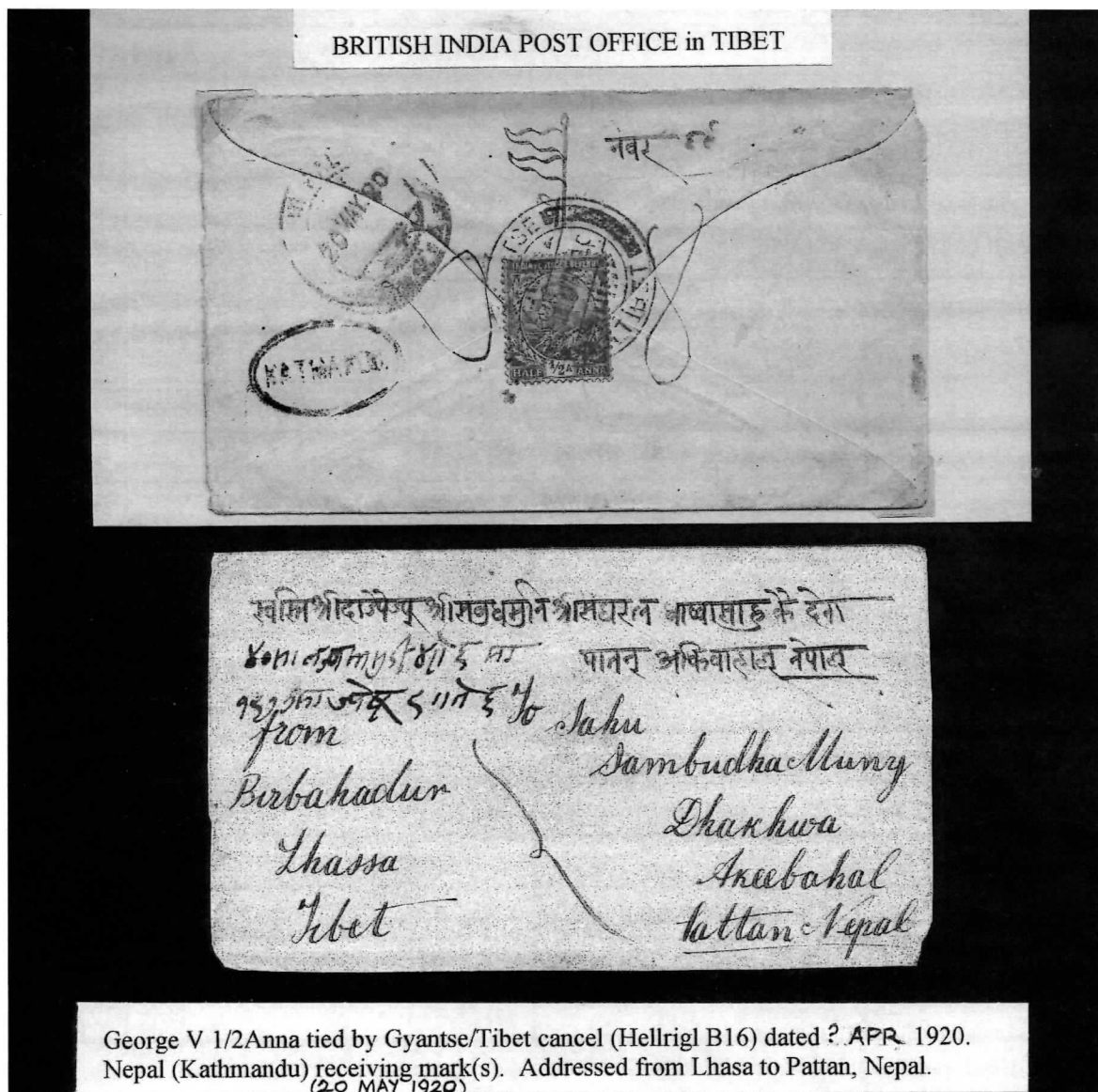
Total from 2012 [149:13]	£ 7331.56
Total from 2013	£ 5013.47
Difference	(£ 2318.09)

## Early B4 Gyantse Postmark by Brian W. Smith

Ed Boers reported an early B4 Gyantse postmark in issue 153 of *Postal Himal* [see 'Some New Postal Historical Facts' of Tibet by Ed Boers 153:3 -ed.] and asked if any member had an earlier strike of it. I have a similar cover but dated about eight months earlier. The date is a little indistinct, but appears to be ? May 1920. The Kathmandu receiving mark is 20 May 1920.

I have noticed one or two covers carrying this postmark for sale on eBay in recent weeks, but none as early as this.

As a footnote, Hellrigl in his book *Postal Markings of Tibet* 1996 states the earliest record for this postmark is 13.05.1918



## The Mount Everest Stamps of Tibet

by Alan Warren

In conjunction with the 1924 Second British Expedition to climb Mt. Everest, which resulted in the disappearance of George Mallory and Andrew Irvine, a special stamp was prepared and used. This issue was the inspiration of the promoter Capt. John Baptist Lucius Noel (1890-1989) who formed a company for the photographic and movie rights to record the ascent. His offer to prepare souvenir cards for collectors with the stamp is described in the Figure 1 newspaper article (source unknown).

The most common use of this "label" or "Cinderella" is on souvenir cards as seen in Figures 2 and 3 (front and reverse). Most cards were mailed by Noel from Darjeeling or Calcutta, as this one was. The 1½ annas India stamp is cancelled with a pictorial postmark at Calcutta on October 20, 1924. The stamp itself is tied with a red Rongbuk Glacier base camp marking.

Much more challenging is to find use of this stamp on correspondence other than this souvenir postcard. Figures 4 and 5 show another card but posted at Pharijong June 28, 1924. The label is tied with a black 2-ring marking with the word TIBET between two bars. The use of this marking at Pharijong lasted only five days, June 25-29.

An even more interesting use of the label is seen in Figures 6 and 7. Although the label is again tied with the double ring TIBET marking, the use is on the reverse of a postal stationery card of India that has been surcharged ½ cent on the ½-anna indicium. The double ring mark was also applied to the front of the postal card and the card was cancelled with a Yatung-Tibet via Siliguri mark on August 1, 1924. It is addressed to Nainital, India where it was marked on arrival August 5.



Figure 1

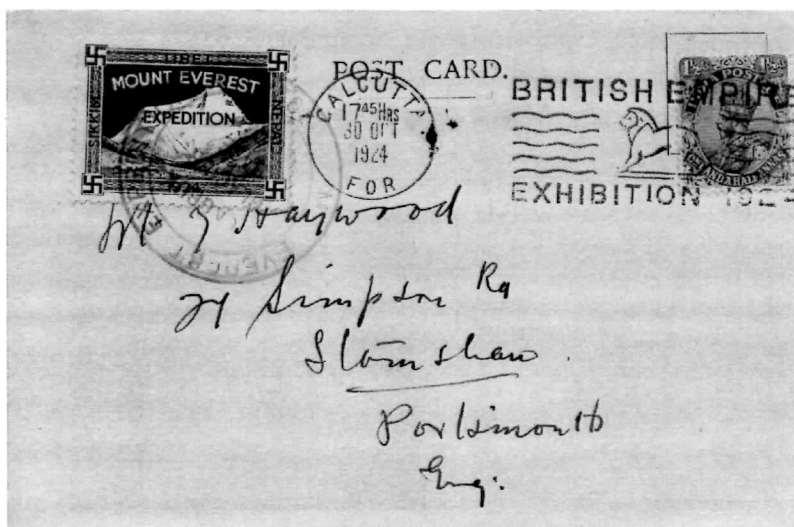


Figure 2

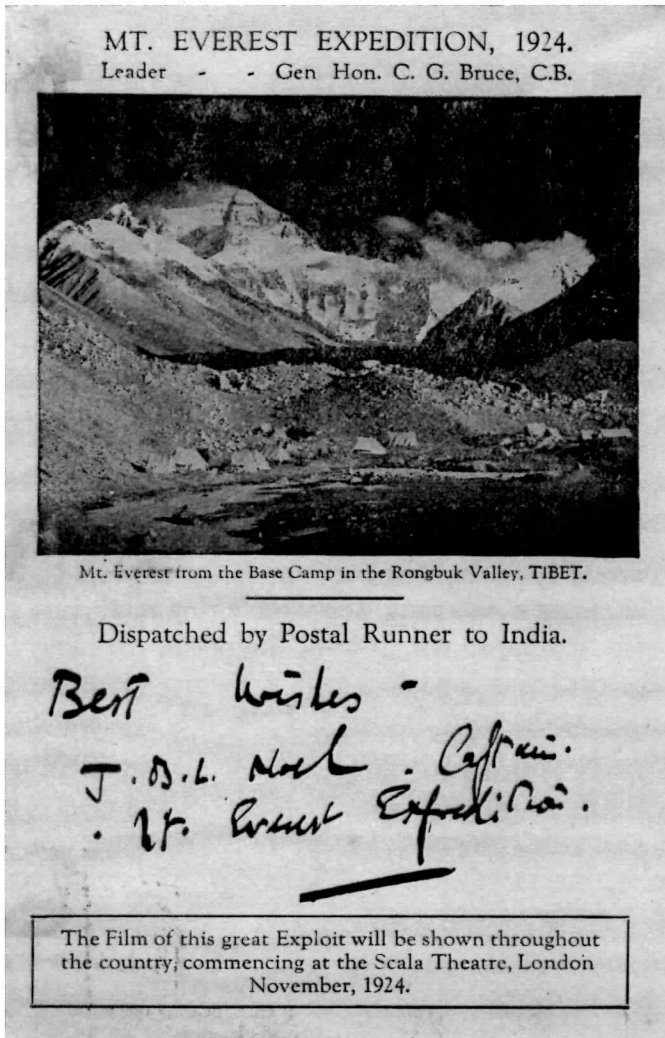


Figure 3

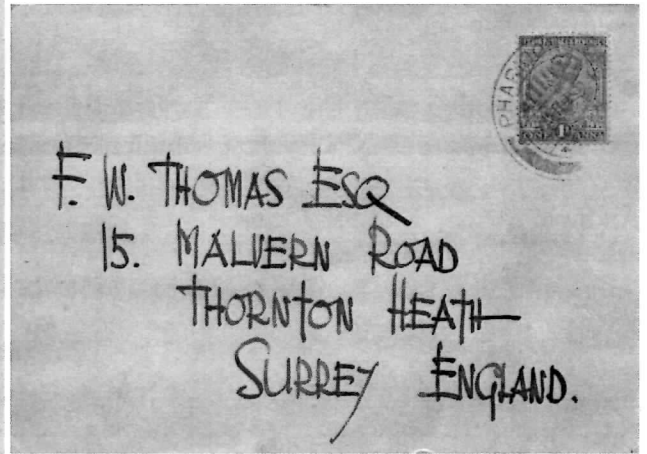


Figure 4



Figure 5



Figure 6



Figure 7

## Custom Mark of Listi by Dick van der Wateren

Some years ago I obtained a small paper (Figure 1) with two different markings. The larger marking (Figure 2) reads **Shri Listi Bhansar - 77** and the smaller one (Figure 3) should be the one belonging to the Custom Office or Custom Officer. The receipt is dated 1977 Paush 06 BS, corresponding to 19 December 1920 AD.

The text of the receipt reads: *“From Custom Office Sahu Rudraman Nhaikantala”* and the subject is that *“the packet has been sent with a seal without taking Revenue, check the seal carefully and levy the Custom Revenue.”*

So, the former owner had this interesting receipt with an unrecorded custom marking and the buyer (myself) did not know where Listi was situated.

Searching on the internet was not successful, but on a map edited by the Research Scheme Nepal I found the name Nisti (Figure 4). Is Nisti the same as Listi? Where could I find more about this town? Fortunately I have Parceval London’s book *Nepal* and the index sent me to page 35 where I found the following about the track from Kuti to Kathmandu: *“At the seventy-sixth milestone is the village of Nogliakot. Eight miles farther on is Ruldu and*

*at the fourteenth mile Nesti, or Listi, is reached, a name that appears more than once in the record of the campaigns between Tibet and Nepal.”* More interesting information is found in the same publication at page 232: *“From Curhi one reaches in five days the town of Nesti where the inhabitants live in the darkness of idolatry”* and the next paragraph: *“From Nesti the traveler reaches Cadmendu, the capital of Neebal in six days.”*

These last words came from the Jesuit Pater Grueber on his journey from Peiking to Rome in 1661. The question for me is for what reason did Listi act as the custom office instead of Tatapani a few miles to the north on the road to the border town of Kodari? Hellrigl has stated that the Tatapani custom office was in use from 1895 up to 1924 and our Listi marking is of 1920. Was the Tatapani office out of use at this time (1920) and if so, why? Or were both of these offices in use at the same time?

The normal route from Kodari over Barabise and Dhulikel to Kathmandu was, I believe, along the Bhote Kosi and Listi lies in a straight line about 4 miles to the left of this road.

If any member also has a Listi document maybe he can solve this problem.

Figure 1

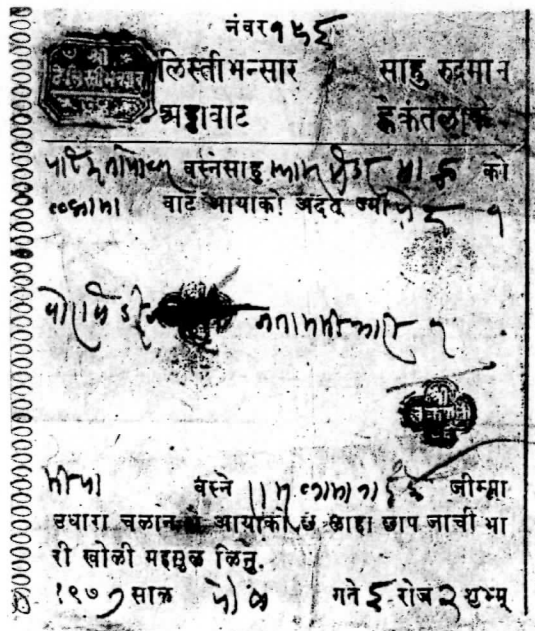


Figure 2

Listi Custom Mark  
(Unrecorded)



Figure 3

Seal of the Listi  
Custom Officer



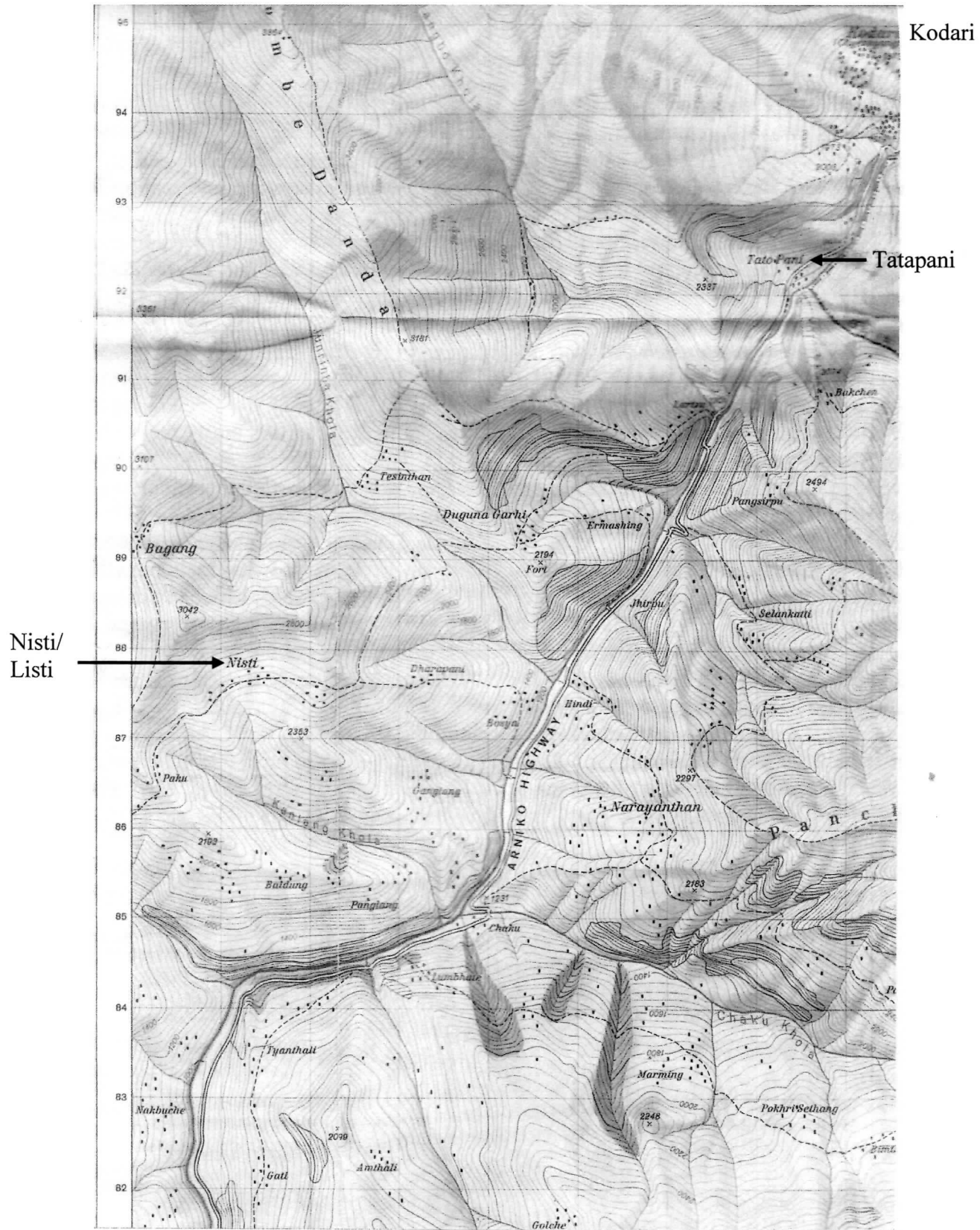


Figure 4

## A Bailey Cover? by Brian Smith

I recently purchased this on eBay - apparently cut from a Bailey cover.

The piece is postmarked GYANTZE 29 DEC 1922. Major F. M. Bailey was Political Officer, Sikkim from June 1921 until May 1926, then from December 1926 until October 1928.<sup>1</sup>

I am assuming that Bailey was at The Residence, Gantok, when he received this letter from Gyantse. The Tibetan script at the top may be relevant.

Can anyone shed any light on this?



[Anyone having information on this item can respond by email either to Brian at [brian63@inbox.com](mailto:brian63@inbox.com) or to the editor at [editorofpostalhimal@cox.net](mailto:editorofpostalhimal@cox.net) or by postal mail either to Mr. Brian W. Smith, 23 West Leake Lane, Kingston-on-Soar, Nottingham NG11 0DN, Great Britain or to Mr. Richard M. Hanchett, 6 Rainbow Court, Warwick, RI 02889-1118, USA -ed.]

---

<sup>1</sup> *Tibet and the British Raj*, Alex McKay, 1997



## Message from the President by Colin Hepper FRPSL

At our meeting at WESTPEX we discussed the potential problem we could have with our finances. We currently have £5000 in our combined account, which is £2000 less than two years ago, and with the continual increase in postage and printing costs it is estimated that at some time in the future we will be in serious difficulties.

There are a number of options available to us. The first being, to suspend Life Membership. This was agreed to and is being implemented immediately.

The heaviest cost is postage, and the bulk of this cost is to members outside of the USA, which is approximately triple the cost of the USA postage. So we may have to implement a two-tier system where the subscription rates for members outside of the USA pay a higher rate.

The most cost effective method would be to send Postal HIMAL by email as a PDF file and would cost the society nothing and subscriptions could hopefully remain at the current level to cover administrative costs, subscriptions to national philatelic bodies and the hire of rooms for society meetings at international events etc.

Any introduction to these changes would be gradual as not all members pay their subscriptions yearly, but when subscriptions are due the member would be asked to choose between a possible increase in dues or to have no increase and receive Postal HIMAL by email.

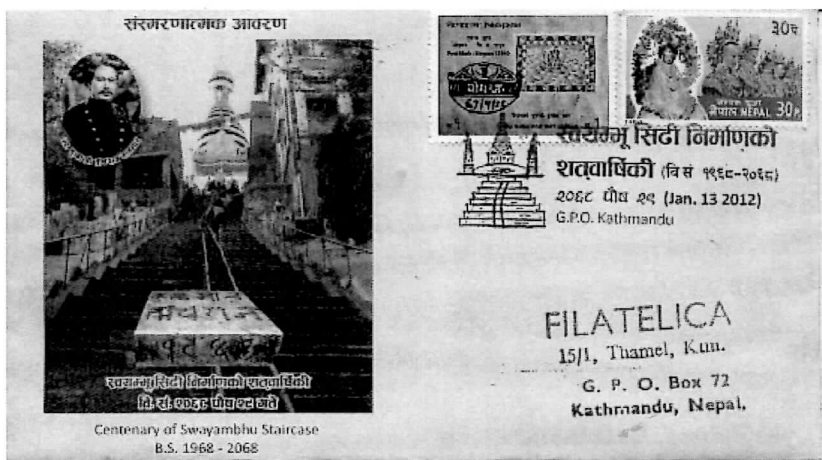
The advantage of having Postal HIMAL by email is that it would be in full colour and the member could choose between printing their own hard copy or keeping it on file on their computer.

The current Life Members will be asked if they would like to have Postal HIMAL by email.

Comments on these proposals would be appreciated.

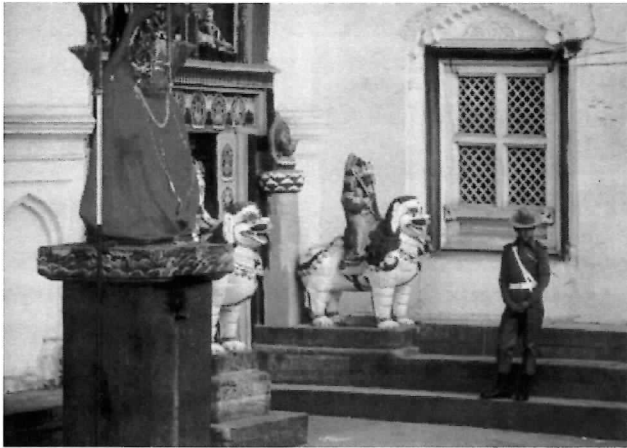
[Members who wish to comment may do so to either Colin or the editor. Colin's and the editor's email addresses and postal addresses are on the inside front cover - ed.]

# Commerative Covers by Surendra Lal Shrestha



**Photos from Nepal**  
by Alfonso G. Zulueta, Jr.

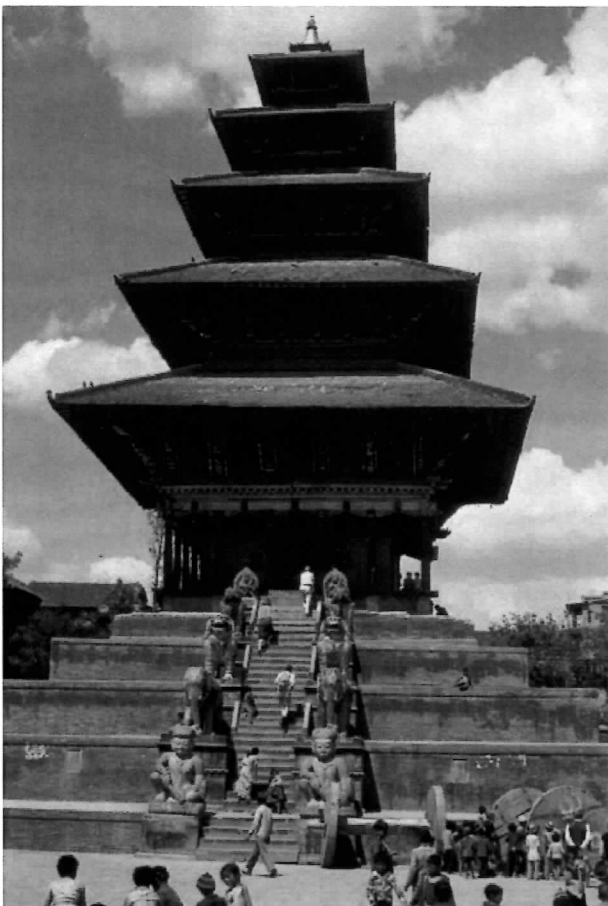
[These photos were all taken by Al during a trip to Nepal in 1980. See also 150:13 and 152:13 -ed.]



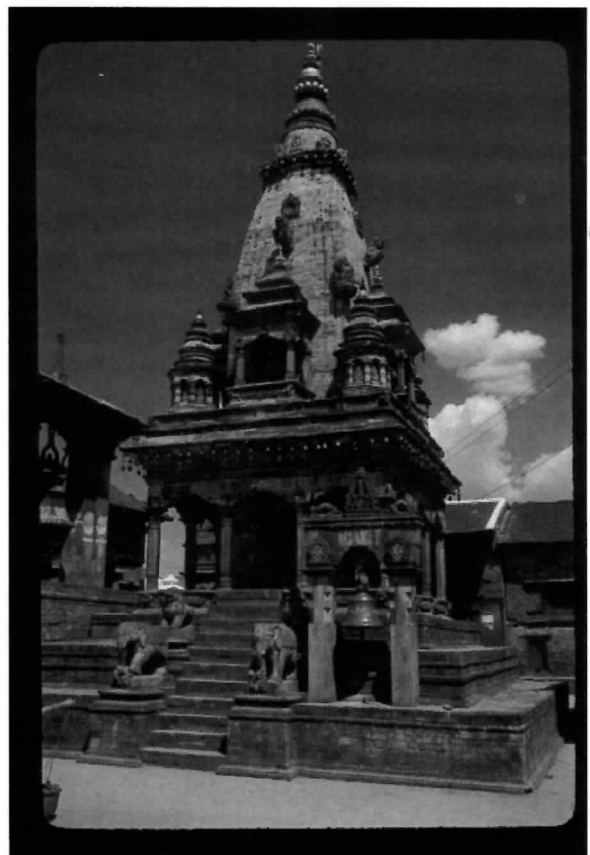
Entrance to old Royal Palace, Kathmandu



Feast Preparation Kathmandu



Nyatapola Temple Taumadhi Square  
Bhaktapur



Western Facade Vatsala Temple  
Bhaktapur